

State of Wyoming Corner Record

(In compliance with the CORNER PERPETUATION AND FILING ACT, Wyoming Statutes, 1977, Section 36-11-101, et. seq., and the Rules and Regulations of the Board of Registration for Professional Engineers and Professional Land Surveyors)

Reverse side of this form may be used if more space is needed.

Record of original survey and citation of source of historical information (if corner is lost or obliterated). Description of corner monumentation evidence found and/or monument and accessories established to perpetuate the location of this corner. Sketch of relative location of monument, accessories, and reference points with course and distance to adjacent corner(s) (if determined in this survey). Method and rationale for reestablishment of lost or obliterated corner.

G.L.O. Notes: U.S. Deputy Surveyor, Edwin James, June 22, 1871; 80.00 Chains... Set a lime stone 25 x 14 x 10 for corner to Sections 20, 21, 28 & 29;

Found: A loosely set 20" x 8" x 7" faintly marked sandstone, 1' south of fenceline. Stone was marked with a faint 2 notches on the south face and 4 on the east face.

Set: At the corner point I set a No. 6 x 24" rebar with a marked 3 1/4" domed aluminum cap. Also set a 5' steel fence post witness 2' west. Buried the original stone as a memorial 1' east of corner point.

See back of this sheet for ties to adjacent monuments.

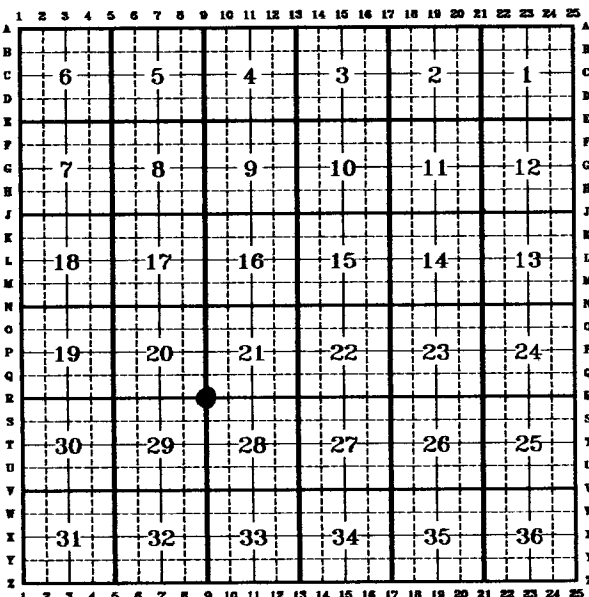
Aluminum Cap Markings

T.15N.	R.64W.
S.20	S.21
S.29	S.28
1994	
PLS 2927	

200712
 LARAMIE COUNTY CLERK
 CHEYENNE, WY.
 97 APR 7 PM 4 40

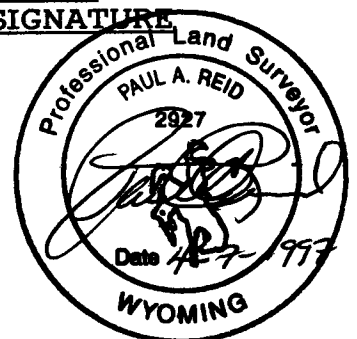
Date of Field Work: 16, May, 1994 Office Reference: EXXON LOOSELEAF

CROSS INDEX DIAGRAM

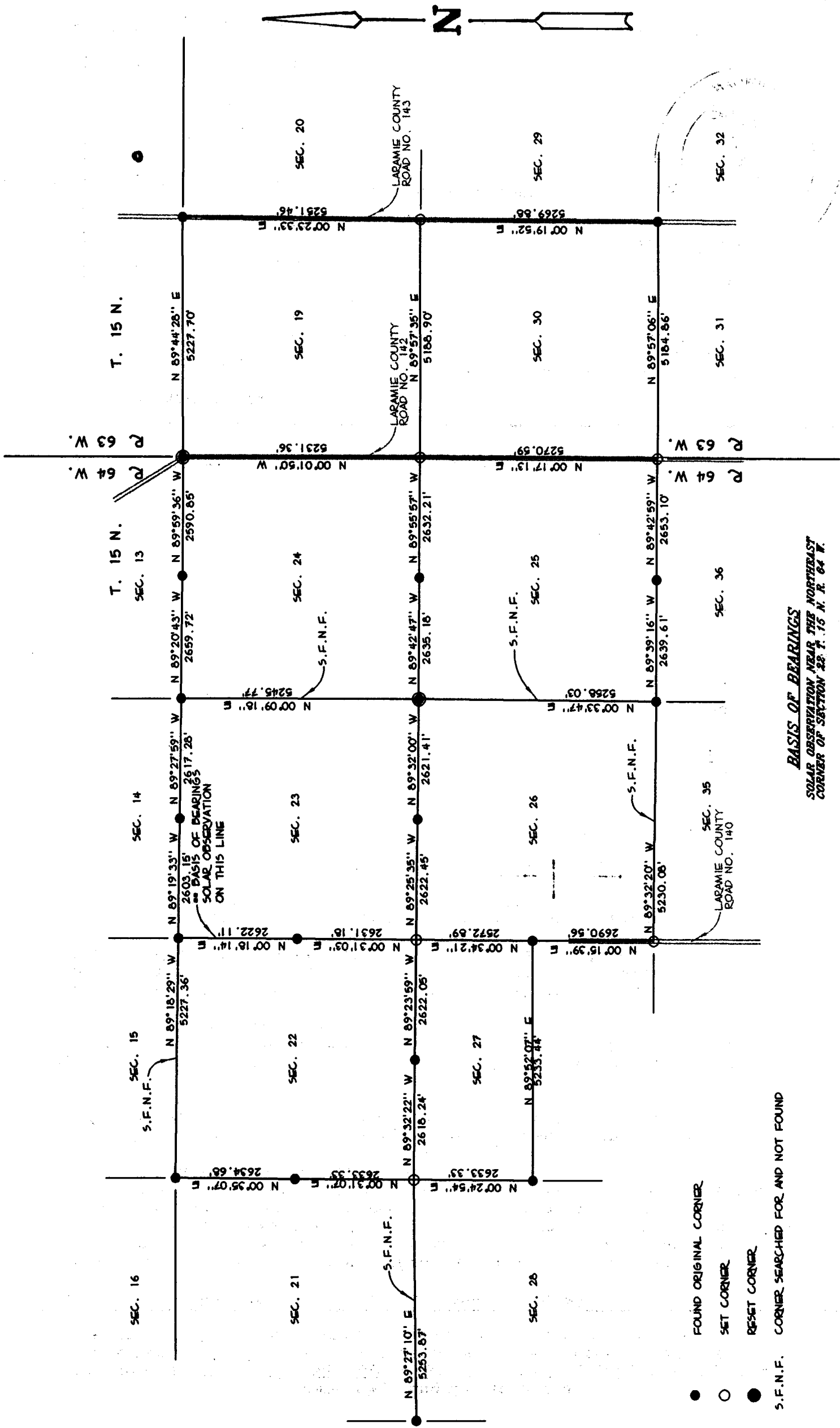


Firm/Agency, Address
Paul A. Reid, A.V.I.p.c.
2035 Westland Road
Cheyenne, WY 82001
 Telephone Number:
(307)-634-6017

This corner record was prepared by me or under my direction and supervision.
SEAL & SIGNATURE



Corner Name: NE Corner Section: 29 T 15N R 64W; 6TH P.M. Cross-Index No.: R-9



- FOUND ORIGINAL CORNER
- SET CORNER
- RESET CORNER
- S.F.N.F. CORNER SEARCHED FOR AND NOT FOUND

BASIS OF BEARINGS
 SOLAR OBSERVATION NEAR THE NORTHEAST
 CORNER OF SECTION 25, T. 15 N. R. 64 W.